



GamesOnTrack A/S, Uhresoevej 35, DK 7500 Holstebro, Denmark, www.gamesontrack.com
Tel: +45 3070 3777, email: nb@gamesontrack.com, CVR and VAT number: DK 3105 3013

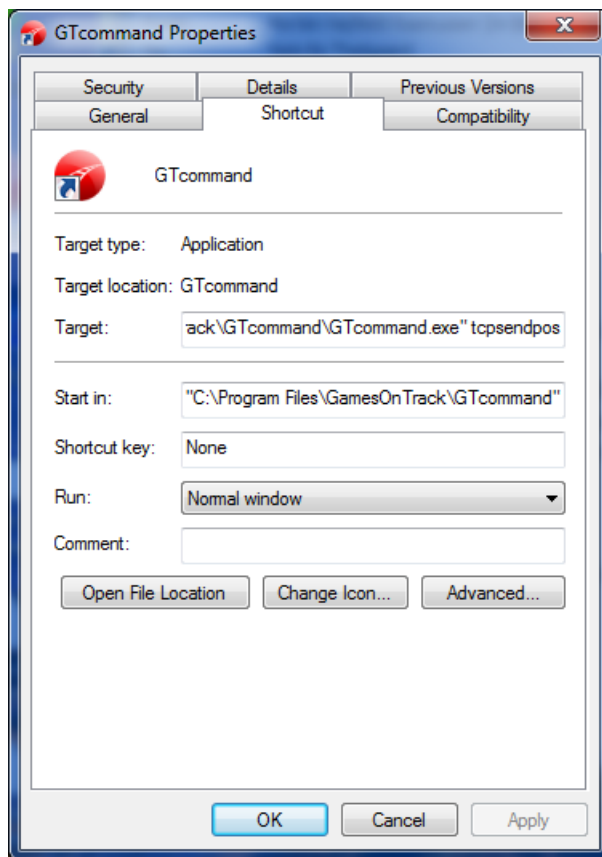
GT-Position IP interface

GT-Position can provide all raw position data as an output on a TCP-IP address. The user must then provide any additional calculations and graphical depictions. Used for applications with 3rd party software.

Setup

Install GT-Commands normally. Set up GT-position as explained in chapter 11 in the manual

- Attach the central to a USB port on PC.
- Activate the 3 receivers and the transmitters that are going to be used.
- Set up a scenario based on the 3 receivers for 3D measurement.
- Check that all diodes on the central are on.



Change the path in the shortcut for GT-Command

Fig 1: Insert the parameter TCPSendPos in the target line or run GT-command from the command line with the TCPSendPos paramter



GamesOnTrack A/S, Uhresoevej 35, DK 7500 Holstebro, Denmark, www.gamesontrack.com
Tel: +45 3070 3777, email: nb@gamesontrack.com, CVR and VAT number: DK 3105 3013

Activate recording of data by starting GT-Command, choosing files/record position data

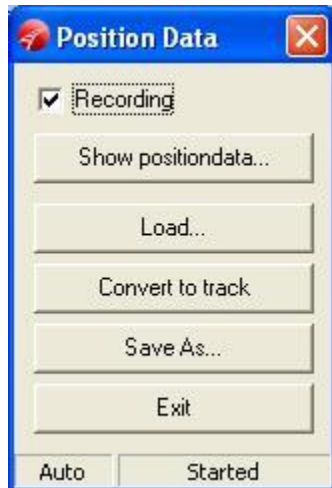


Fig 2: Check recording

The GT-Command is streaming data and the application can be minimized

Port

Data is per default streamed on port 15010

If another port is desired, changing the parameter to TCPSendPos:18000 will provide data on the specific port 18000

Position data

Data is delivered in a comma-separated string. For every receiver there is an ID, distance and level:

<Time>, <Sender ID>, <x>, <y>, <z>, <Receiver ID>, <Distance>, <Level>

<Time> - Milliseconds after start

<Sender ID> - The specific transmitter ID, can be seen on the label

<valid measurement> - 1 for valid measurement, 0 for invalid

<x> - The x-coordinate in mm

<y> - The y-coordinate in mm

<z> - The z-coordinate in mm (is normally negative in a right handed coordinate system)

<Receiver ID> - The specific receiver ID, can be seen on the label

<Distance> - The measured distance in mm

<Level> - The level of the measured ultrasound signal at the receiver. From 0-1000, with 0 being the lowest.

An example of a line of strings can be seen below:



GamesOnTrack A/S, Uhresoevej 35, DK 7500 Holstebro, Denmark, www.gamesontrack.com
Tel: +45 3070 3777, email: nb@gamesontrack.com, CVR and VAT number: DK 3105 3013

55924,11000,1,1190,871,-1435,20104,2059,918,20103,1727,966,20105,1498,999;
56074,11015,1,1055,712,-1430,20104,1937,912,20103,1756,922,20105,1312,865;
56224,11000,1,1189,873,-1434,20104,2056,917,20103,1726,960,20105,1503,987;
56374,11015,1,1052,716,-1430,20104,1930,910,20103,1756,925,20105,1320,860;

Test

The connection can be tested with a program like Hyperterminal in Windows XP, by inserting the IP address and port of the PC running the application.