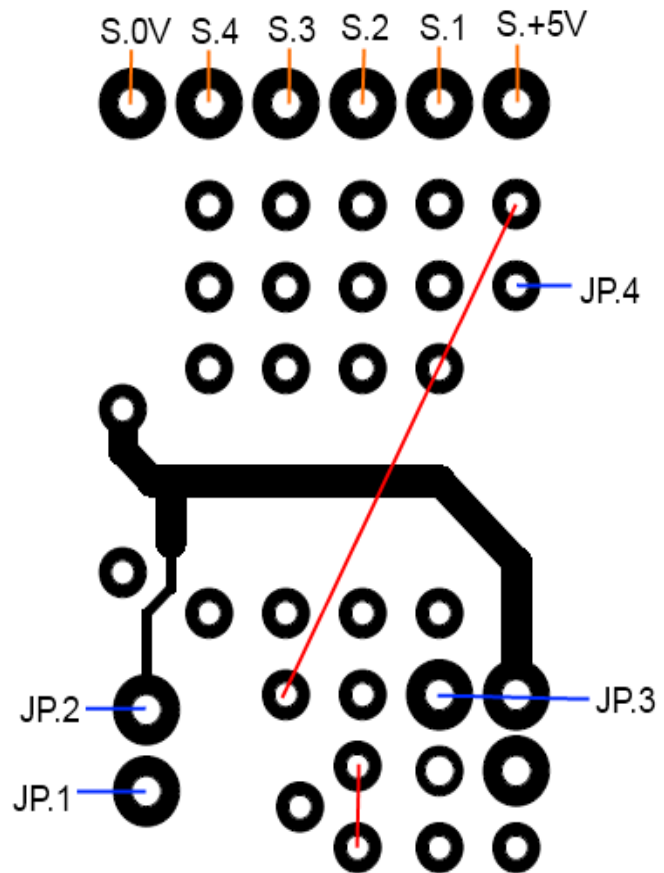


## Using a BS-1 PCB for driving 2-4 color signals.

### Build instructions

1. Place 2 wires on the PCB. They are colored red on the image to the right.
2. Place the following parts:
  1. U1
  2. R2..R5
  3. C1
3. Connect 4 wires from the PCB to an MG50 (or connector). They are colored blue on the image to the right.
4. Connect the signal to the PCB. They connections are colored orange.



### Firmware

The following firmware editions are available:

Edition	Description
MgvBs1ForSignals-CMNGND-COLORS2	Used for 2 signals, each having 2 colors. Signals use 0v as common connection.
MgvBs1ForSignals-CMNGND-COLORS4	Used for 1 signal, having 3 or 4 colors. Signals use 0v as common connection.
MgvBs1ForSignals-CMNPLUS-COLORS2	Used for 2 signals, each having 2 colors. Signals use +5v as common connection.
MgvBs1ForSignals-CMNPLUS-COLORS4	Used for 1 signal, having 3 or 4 colors. Signals use +5v as common connection.